



International journal of basic and applied research

www.pragatipublication.com

ISSN 2249-3352 (P) 2278-0505 (E)

Cosmos Impact Factor-5.86

Rural Demographical structure of KVB Puram Mandal in Chittoor District, Andhra Pradesh

A.Surekha* & Dr. M. Reddi Bhaskara Reddy**

Research Scholar*, Assistant Professor

Department of Geography, S.V. University, Tirupati, Andhra Pradesh – 517 502

Abstract

The present paper aims to analyse the total population and sex wise, caste wise and religion wise distribution of population. India is world largest population particularly youth population are consist of 2011 census report. Youth can make or mar society, which one of the country here on a healthy youth population on that country has developed for the entire sector. K.V.B Puram Mandal spreads over an area of 490.87 Sq.k.m and population of 42,111 (2011 Census) which gives the density of 85 per Sq.k.m. The literacy rate of K.V.B.Puram Mandal is 50.09% out of which 57.58% males are literate and 42.66% females are literate.

Key words: Density, Population, Religion, Sex ratio.

Introduction

Human resource includes the man-power and labour force. Man is an inexhaustible store of energy and skill. And so, man himself is a resource. But man is more vitally a resource creating factor. Resources are created for him and by him. So the population is considered as a resource for the economic development of the present study. K.V.B.Puram is a mandal located in Chittoor district of Andhra Pradesh. It is one of 66 mandals of Chittoor district. There are 39 villages as per the census India 2011.K.V.B.Puram mandal has 10,875 households, Population of 42,111 of which 20,965 are males and 21,146 are females. The population of children b/w age of 0 to 6 is 5137 which is 12.2% of total population.

The sex ratio of K.V.B.Puram mandal is around 1009 compared to 993 which is average of Andhra Pradesh state. The literacy rate of K.V.B. Puram mandal is 50.09% out of which 57.58% males are literates and 42.66% females are literates. The total area of K.V.B.Puram mandal is 493.49 sq.km with population density of 85 per sq kilometer. Out of total population 40% of population lives in urban area and 60% lives in rural areas.

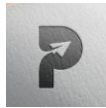
731

Received: 8 February Revised: 17 February Accepted: 24 February

Index in Cosmos

March 2019 Volume 9 Number 3

UGC Approved Journal



Study area

The study area is the one of the important mandal in Chittoor district of Andhra Pradesh and K V B Puram is a head quarter of the K V B Puram mandal. It is belongs to Rayalaseema Region. It is located between lat 13°57'67"N and long 79°69'47"E. It is surrounded by Sri Kalasthi and Thottambedu Mandal towards North, Pitchtoor and Nindra Mandals towards South, B.N. Khandriga and Varadhayalapalem Mandal towards East, Narayanavanam and Yerpedu Mandal towards West. It is covers in the Survey of India Toposheet no's 57 O/10, 57 O/11, 57O/14 and 57 O/15 with a scale of 1:50,000.As per 2011 census of India, the mandal had a population of **39,432**.the total population constitute, 19,897 males, and 19535 females. The geographical extent of an area is 490.87 sq.km (Figure 1).

Objectives

The objective of this paper is to provide an account of demographic characteristics of K.V.B. Puram Mandal, analysis the trends of rural and urban population in study area and finally overlap overall demographic structure, socio and geographical status of the study area.

Database and Methodology

The methodology adopted here has addressed the related to demographical and population geographical aspects related to dynamics of population in the study area. The researcher follows a systematic methodology adopted in the present study with regard to the selection of sample, collection of data from various departments. To trace the census of the mandal of K.V.B. Puram. The investigator is collected largely on the secondary data. The secondary data was collected from various sources such as the Census reports, Government records, District statistical hand Book and other literature available on relevant aspects. The socio-economic and Demographic information is collected from the Census Reports and other institutions like Mandal Assistant statistical officer, Mandal Revenue officers Records, The relevant Demographic features such as population density, population growth over the period, population potentials etc which appears to have a direct bearing on the land patterns of the mandal. In present study several statistical methods and techniques are used.

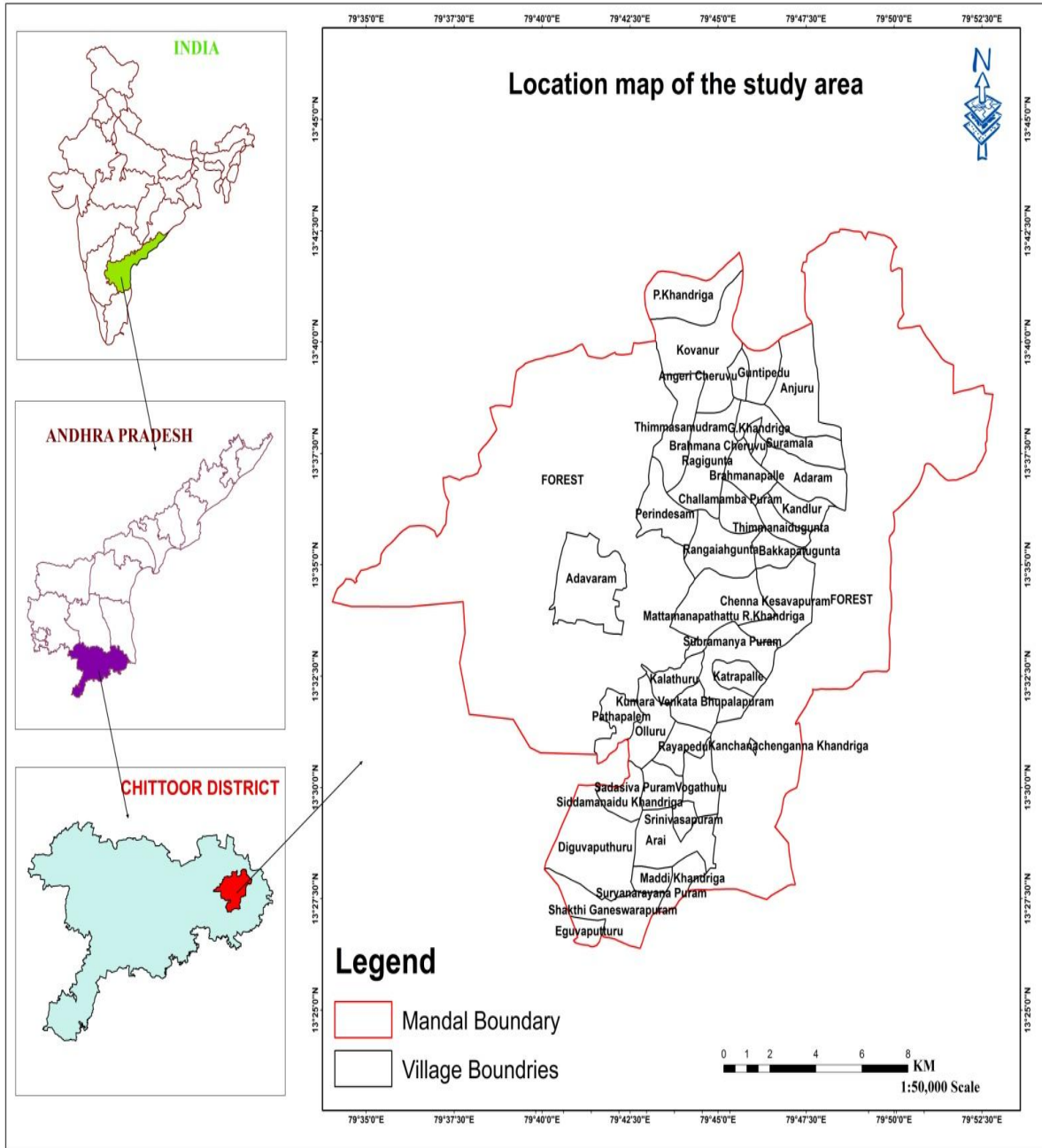




Table No. 1

K.V.B. Puram Mandal Urban & Rural Population

S.No	Description	Urban	Rural
1	Number of House holds	0	10,875
2	Total Population	0	42,111
3	Population (%)	0	50.21%
4	Male Population	0	20,965
5	Female Population	0	21,146
6	Sex Ratio	0	1009
7	Literacy (%)	0	50.09%

Sources: Collect in Assistant statistical officer, KVB Puram mandal office, Chittoor district.

K.V.B Puram Mandal spreads over an area of 490.87 Sq.k.m and population of 42,111 (2011 Census) which gives the density of 85 per Sq.k.m. The literacy rate of K.V.B. Puram Mandal is 50.09% out of which 57.58% males are literate and 42.66% females are literate. The above Table No.1 shows the demographic structure and area particulars of K.V.B Puram Mandal. It transpires from the above table that number of households is 10,875, total population is 42,111. Out of total population, 50% of population lives in urban area and 60% lives in Rural area. Mandal total literacy is 50.09%.



International journal of basic and applied research

www.pragatipublication.com

ISSN 2249-3352 (P) 2278-0505 (E)

Cosmos Impact Factor-5.86

Table No. 2
Population Particulars of K.V.B Puram Mandal

Description	Population	Percentage
Hindu	41,433	98.39
Muslim	463	1.1
Christian	64	0.15
Jains	3	0.01
Sikh	2	
Religion Not Stated	143	0.34
Others	3	0.01
Total	42,111	100

Sources: Collect in Assistant statistical officer, KVB Puram mandal office, Chittoor district.

The above Table No.2 shows the religion wise population particulars of K.V.B Puram Mandal. Hindu Population is 41,433 i.e 98.39 percentage of the total population; Muslim population is 463 which is around 1.1 per cent of the total population. It transpires from the above table that number of households is 10,875, total population is 42,111. The below graph shows on represents on the population and percentages of religion wise in the study area.

735 | Received: 8 February Revised: 17 February Accepted: 24 February

Index in Cosmos

March 2019 Volume 9 Number 3

UGC Approved Journal

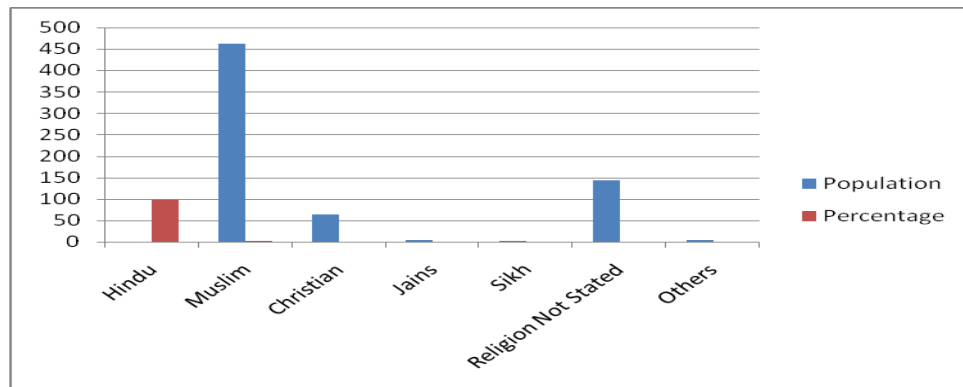


International journal of basic and applied research

www.pragatipublication.com

ISSN 2249-3352 (P) 2278-0505 (E)

Cosmos Impact Factor-5.86





International journal of basic and applied research

www.pragatipublication.com

ISSN 2249-3352 (P) 2278-0505 (E)

Cosmos Impact Factor-5.86

Table No. 3
Demographic Particulars as per 2011 Census

S.No	REVENUE VILLAGE	SC Population			ST Population			Others Population			Total Population		
		M	F	T	M	F	T	M	F	T	M	F	T
1	Pavanavari Khandriga	245	252	490	244	249	483	396	362	745	869	845	1698
2	Kovanuru	477	455	932	181	167	348	225	216	441	883	838	1721
3	Thimma samudram	165	162	327	146	145	291	609	591	1204	920	902	1822
4	Gunti Pedu	282	258	540	61	63	124	261	285	546	604	606	1210
5	Anjuru	228	238	466	153	158	311	725	737	1465	1109	1133	2242
6	Suramala	196	179	375	0	1	1	344	382	726	540	562	1102
7	Adaram	81	74	155	140	142	282	155	193	348	376	409	785
8	Kanduluru	472	516	988	20	18	38	309	301	610	801	835	1636
9	Brahmanapalle	258	250	571	3	3	6	300	309	609	561	562	1123
10	Ragogunta	0	0	0	25	24	49	656	664	1320	681	688	1369
11	Perimdesam	690	661	1351	11	9	20	327	363	690	1028	1033	2061



International journal of basic and applied research

www.pragatipublication.com

ISSN 2249-3352 (P) 2278-0505 (E)

Cosmos Impact Factor-5.86

12	Rangaihgunta	12	11	23	145	134	279	264	240	504	421	385	806
13	Pudi@ C.K.Puram	30	33	63	21	18	39	243	266	509	294	317	611
14	Eguvapudi	0	0	0	30	35	65	333	338	671	363	373	736
15	Mattam	0	0	0	70	60	130	300	297	597	370	357	727
16	M A Rajula Khandriga	278	309	587	39	38	77	363	377	740	680	724	1404
17	Kalathuru	614	600	1214	274	289	563	848	900	1748	1736	1789	3525
18	KVB Puram	214	249	463	45	65	110	515	580	1131	810	894	1704
19	Katrapalle	328	336	664	123	115	238	300	304	604	751	755	1506
20	Patha Palyam	197	197	394	01	04	05	335	334	669	533	535	1068
21	Rayapedu	400	364	764	83	86	169	385	379	764	868	829	1697
22	Olluru	128	225	253	98	95	193	330	323	653	556	543	1099
23	Siddama Naidu Khandriga	87	72	159	0	0	0	178	172	350	265	244	509
24	Sadasiva Puram	110	108	218	4	3	7	1193	117 9	2372	1307	1209	2597

738

Received: 8 February Revised: 17 February Accepted: 24 February

Index in Cosmos

March 2019 Volume 9 Number 3

UGC Approved Journal



International journal of basic and applied research

www.pragatipublication.com

ISSN 2249-3352 (P) 2278-0505 (E)

Cosmos Impact Factor-5.86

25	Arai	154	168	322	52	52	104	682	722	1402	888	940	1828		
26	Diguva Puturu	116	129	245	50	42	92	447	440	887	613	611	1224		
27	Kota mangapuram	166	152	318	32	34	66	443	444	887	641	630	1271		
28	Middi Khandriga	0	0	0	0	0	0	483	484	967	483	484	967		
29	Adavaram	170	192	362	115	112	227	746	747	1493	1031	1051	2082		
	Total	609	6081	1217	1	2155	2149	4304	1272	129	2563	2096	5	21146	42111

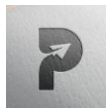
Sources: Collect in Assistant statistical officer, KVB Puram mandal office, Chittoor district.

739 | Received: 8 February Revised: 17 February Accepted: 24 February

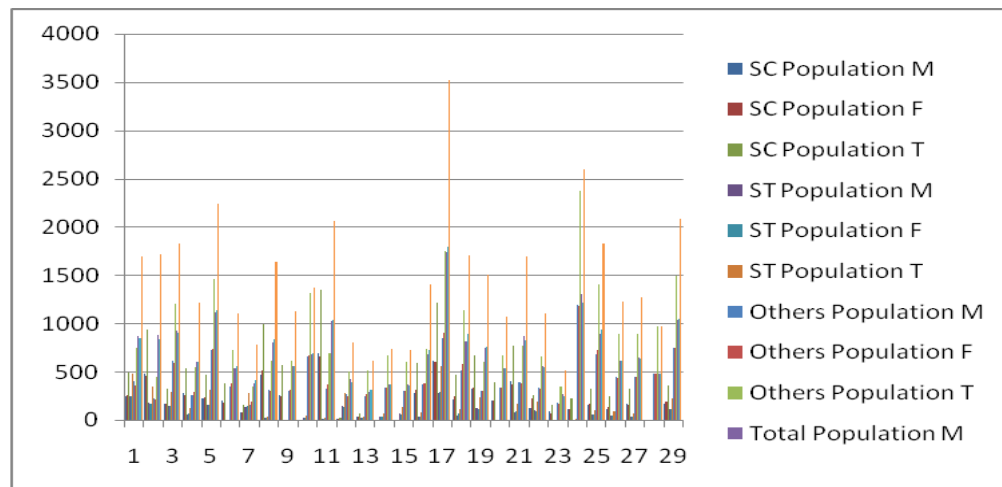
Index in Cosmos

March 2019 Volume 9 Number 3

UGC Approved Journal



Demographic Particulars as per 2011 Census



K.V.B. Puram is a Mandal located in Chittoor district of Andhra Pradesh. It is one of 66 Mandals of Chittoor district. There are 39 villages and 0 towns in K.V.B. Puram Mandal. As per the Census India 2011, K.V.B. Puram Mandal has 10,875 households, population of 42,111 of which 20,965 are males and 21,146 are females. The population of children between age 0-6 is 5,137 which is 12.2% of total population (Table No. 3).

The sex-ratio of K.V.B. Puram Mandal is around 1009 compared to 993 which is average of Andhra Pradesh state. The literacy rate of K.V.B. Puram Mandal is 50.09% out of which 57.58% males are literate and 42.66% females are literate. The total area of K.V.B. Puram is 493.49 sq.km with population density of 85 per sq.km. Out of total population, 100% of population lives in urban area and 0 lives in rural area. There are 28.9% Scheduled Caste (SC) and 10.22% Scheduled Tribe (ST) of total population, 25636 persons are other population including in male and female population and also urban population are nil in the study area. The distribution of Population (2011) is shown in the table K.V.B. Puram mandal has predominantly vast proportion of rural Population, which is unevenly distributed. But in the topographically the study area is undulating terrain and plain land along the stream courses, there is agglomeration of Population mostly in the magnitude of 1000-3000. This is due to the migration of male population seeking some employment for their livelihood, and hence the proportion of male population is more than that of female population.



Conclusion

The study highlights that regional disparity in the demographic particulars of K.V.B Puram mandal. Rural demographic view of the study area analyses through remote sensing data and available secondary sources. The present study of the interest consented in population in caste wise, religion wise, sex ratio and literacy in socio economic aspects and as well as economic growth industrial growth and as the population characteristics based on the available potential resources of the study area.

References

1. Agarwal S.N., (1977), India's Population Problems Tata McGraw Hill New Delhi.
2. Das, M.M. (1979), Geographical Review of India, "Population Pressure and Intensity of Cropping in Assam (India)", Vol.41, No.2pp.105-114.
3. Hand book of statistics-2011, chief planning officer, Chittoor district, Andhra Pradesh.
4. Chandana, R.C (1996) : Geography of Population in Concepts, Determinates and Patterns: Kalyani Publishing.
5. D.Rambhupal Reddy, M.Reddi Bhaskara Reddy (2012), Paripex - Indian Journal of Research, "Urban Demographic Structure of Kadapa city, Kadapa District in Andhra Pradesh", Volume : 1, Issue : 11, page no. 57-58
6. Dr. R.B. Bhagat, (2011), International Journal of Global Environmental Issues, Editorial, Special Issue, "Population and Sustainable Development", Vol. 11, No. ¼, pp. 197-199.

Correspondent Author Email: surekha.akkupalli@gmail.com